



MITSUBISHI ELECTRIC

Multi Room Heat Pump Systems





Contents

About multi room systems p.4

Indoor unit options p.5-12



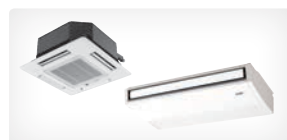
Wall Mounted Units p.5-8

*Classic GE Series, Deluxe FB Series
and the new Designer Series*



Floor Mounted Units p.9

Classic KA Series



Ceiling Mounted Units p.10-11

*Cassette SLZ & PLA Series and
Ceiling Suspended PCA Series*

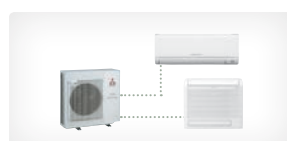


Concealed Systems p.12

*Ceiling Concealed SEZ Series and
Ducted PEA Series*

Controls p.13-14

Outdoor unit options p.15-18



Classic Multi Series Outdoor Unit p.15-16

Connect up to six indoor units



Power Multi Series Outdoor Unit p.17-18

Connect up to eight indoor units

Specifications p.20

Heat pump selection guide p.21





Multi Room Systems



What is a multi room system?

While a standard heat pump system consists of an indoor and outdoor unit, a multi room system allows you to connect multiple indoor units to a single outdoor unit. The World Health Organisation recommends a minimum indoor temperature of 18-20°C for living areas and 16°C overnight for bedrooms. With a multi room heat pump system you have the freedom to choose the ideal unit for each area to keep you comfortable, without cluttering the exterior of your home. Plus, you get the benefit of the superior efficiency and energy savings of Mitsubishi Electric heat pump technology.

Why choose a multi room system?

We know that every home is as individual as its owner. Mitsubishi Electric multi room heat pump systems allow you to choose the perfect model for each room without the need to install multiple outdoor units.

Choosing the right heat pump for your home

This brochure will help guide you through the decision-making process. Once you have selected your preferences, we recommend you book a free in-home consultation with one of our qualified installers. Choosing the right heat pump system requires an assessment of the areas to be heated, to ensure you get the best, most efficient system for your home. One of our qualified installers will carry out accurate sizing calculations, and expertly assess other factors involved in heat loss and gain. Visit www.mitsubishi-electric.co.nz/installer to book your free in-home consultation today!



Classic GE Series

High Wall Mounted

Featuring New Zealand's quietest heat pumps starting at just 19dBA indoor sound, the classic range is ideal for bedrooms or any room where quietness is essential. Larger capacity models feature the handheld 7 day controller, allowing you to "set and forget" by automating operation, saving you both time and money.



Small Room

MSZ-GE22VA
Heating Capacity: 3.3 kW
Cooling Capacity: 2.2 kW

MSZ-GE25VA
Heating Capacity: 3.2 kW
Cooling Capacity: 2.5 kW

MSZ-GE33VA
Heating Capacity: 4.0 kW
Cooling Capacity: 3.3 kW



Medium Room

MSZ-GE42VA
Heating Capacity: 5.4 kW
Cooling Capacity: 4.2 kW

MSZ-GE50VA
Heating Capacity: 5.8 kW
Cooling Capacity: 5.0 kW



Large Room

MSZ-GE60VA
Heating Capacity: 6.8 kW
Cooling Capacity: 6.0 kW

MSZ-GE71VA
Heating Capacity: 8.1 kW
Cooling Capacity: 7.1 kW

MSZ-GE80VA
Heating Capacity: 9.0 kW
Cooling Capacity: 8.0 kW

Features: Classic GE Series

Whisper Quiet Operation

7 Day Controller
(GE60/71/80 only)

i-save Mode

Econo Cool

Anti Allergy Enzyme Filter

Advanced Filtration

Guaranteed heating at -15°C



Deluxe FB Series

High Wall Mounted

The Mitsubishi Electric Deluxe High Wall range offers you ultimate control to ensure year-round comfort. Combining high energy efficiency with unique energy saving features, this range is also specifically designed to include advanced filtration, providing optimal air quality – perfect for asthma and allergy sufferers.



Small Room

MSZ-FB35VA
 Heating Capacity: 4.0 kW
 Cooling Capacity: 3.5 kW

Medium Room

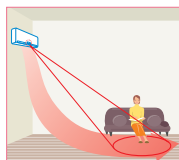
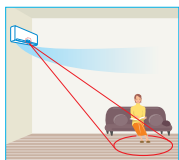
MSZ-FB50VA
 Heating Capacity: 6.0 kW
 Cooling Capacity: 5.0 kW

Plasma Duo
 Filter Systems



Air Purification and Allergen Removal

The Deluxe FB Series features the Plasma Duo Filter system keeps the air pure which is ideal for asthma and allergy sufferers. It has two plasma air purifying functions that work together to remove airborne dirt particles from micron to nano-size in scale.



Advanced Energy Saving Sensor

The advanced “i-see Sensor” measures room temperatures at floor level as well as at the unit itself, seeking out and correcting temperature disparities by directing airflow to specific areas. The sensor controls temperature and air movement to prevent excessive heating or cooling, and unnecessary operation to save energy.

Features: Deluxe FB Series

- Whisper Quiet Operation
- i-see Sensor
- Econo Cool
- Plasma Duo Filter System
- Self-Cleaning Ozone Shower
- Guaranteed heating at -15°C

Visit www.mitsubishi-electric.co.nz for detailed information on these features.



Designer Series

High Wall Mounted

Designed to suit even those with the most discerning style. With elegant, clean lines the Designer Series is available in a glossy black, matte silver or classic white – complementing your home’s decor and existing appliances. All models also feature a 7 day controller, allowing you to “set and forget” by automating operation.



Small Room

MSZ-EF22VA
 Heating Capacity: 3.3 kW
 Cooling Capacity: 2.2 kW

MSZ-EF25VA
 Heating Capacity: 3.2 kW
 Cooling Capacity: 2.5 kW

MSZ-EF35VA
 Heating Capacity: 4.0 kW
 Cooling Capacity: 3.5 kW



Medium Room

MSZ-EF42VA
 Heating Capacity: 5.4 kW
 Cooling Capacity: 4.2 kW

MSZ-EF50VA
 Heating Capacity: 5.8 kW
 Cooling Capacity: 5.0 kW



iF Design Award

The iF Product Design Award is annually conferred by the iF International Forum Design. Every year the award attracts more than 2,000 product entries, which are judged by renowned experts, only the best receive the iF seal of outstanding design quality. The Mitsubishi Electric Designer Series has been awarded the iF Product Design award for its simple and elegant design. The clean, flat surfaces and bevelled edges allow it to blend in discretely with modern interiors.

Features: Designer Series

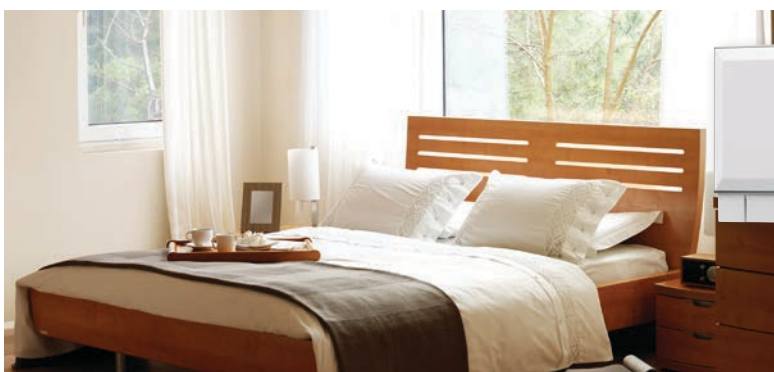
- Whisper Quiet Operation
- 7 Day Controller
- Nano Platinum Filter
- Guaranteed heating at -15°C
- Stylish Flat Panel Design
- Optional Anti Allergy Enzyme Filter



The sleek 'Black Diamond' matches perfectly with living room electronics such as televisions or dark wall coverings.



The smooth 'stainless steel' look unit is ideally suited to kitchens which contain stainless steel appliances.



The range includes a classic white option with a stylish flat panel design. This model fits seamlessly with neutral decors.



Classic KA Series

Floor Mounted

Designed to sit discreetly at floor level, our floor consoles are ideal for replacement of traditional floor mounted heat sources such as night-store heaters or fireplaces. Independently controllable upper and lower vanes provide both optimal air distribution and warm feet.



Small Room

MFZ-KA25VA
 Heating Capacity: 3.4 kW
 Cooling Capacity: 2.5 kW

MFZ-KA35VA
 Heating Capacity: 4.0 kW
 Cooling Capacity: 3.5 kW



Medium Room

MFZ-KA50VA
 Heating Capacity: 6.0 kW
 Cooling Capacity: 4.8 kW

Features: Classic KA Series

- NZ's Quietest Floor Console, from 22dBA*
- Guaranteed heating at -15°C
- Anti Allergy Enzyme Filter
- Healthy Catechin Filter
- Horizontal Airflow
- i-save Mode
- Econo Cool



Cassette SLZ & PLA Series

Ceiling Mounted

Compact and ultra quiet, our range of ceiling cassettes are equipped with four way airflow and cutting edge control. They offer you the flexibility to keep your wall and floor space free without compromising on comfort.



Small Room

SLZ-KA25VAQ/L
Heating Capacity: 3.2 kW
Cooling Capacity: 2.5 kW

SLZ-KA35VAQ/L
Heating Capacity: 4.0 kW
Cooling Capacity: 3.5 kW



Medium Room

SLZ-KA50VAQ/L
Heating Capacity: 5.0 kW
Cooling Capacity: 4.6 kW

PLA-RP60BA
Heating Capacity: 6.9 kW
Cooling Capacity: 6.1 kW



Large Room

PLA-RP71BA
Heating Capacity: 8.0 kW
Cooling Capacity: 7.1 kW

PLA-RP100BA
Heating Capacity: 11.2 kW
Cooling Capacity: 10.0 kW

Features: Cassette SLZ Series

Whisper Quiet Operation

Guaranteed heating at -10°C

Fresh Air Intake



Ceiling Suspended PCA Series

Ceiling Mounted

A stylish, slim-line indoor unit designed to provide comfort in large, open areas such as conference rooms or open plan offices. Mitsubishi Electric's range of Ceiling Suspended indoor units are designed to blend in easily at ceiling height. With four speed settings and auto air-speed adjustment it is ideal for both large and small areas.



Small Room

PCA-RP50KAQ
 Heating Capacity: 5.5 kW
 Cooling Capacity: 5.0 kW

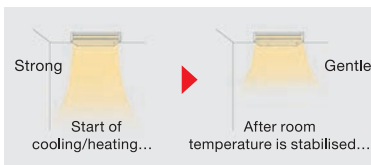
PCA-RP60KAQ
 Heating Capacity: 6.9 kW
 Cooling Capacity: 5.7 kW



Medium Room

PCA-RP71KAQ
 Heating Capacity: 7.9 kW
 Cooling Capacity: 7.1 kW

PCA-RP100KAQ
 Heating Capacity: 11.2 kW
 Cooling Capacity: 10.0 kW



Automatic Air-Speed Adjustment

In addition to the conventional 4-speed setting, units are now equipped with an automatic air-speed adjustment mode. This setting automatically adjusts the air-speed to conditions that match the room environment.

Features: Classic Suspended

- Stylish slim-line design
- Whisper Quiet Operation
- Auto air-speed adjustment
- Guaranteed heating at -15°C
- Four speed settings
- High ceiling mode
- Low ceiling mode



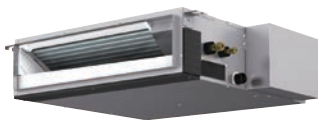
Concealed Systems

Ceiling Concealed SEZ Series

These concealed units are compact, whisper quiet and highly efficient. Our concealed units fit easily and discreetly into rooms with lowered ceilings. This option is used to heat a single room in a discrete, unobtrusive way.

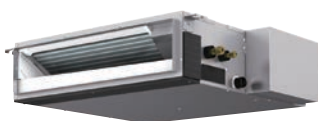
Ducted PEA Series

These units are completely hidden from view with only subtle grilles visible. The unit is installed in the roof cavity and ducts are used to connect to multiple rooms for heating and cooling.



Small Room

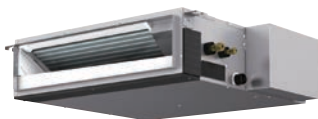
SEZ-KD35VAQ
 Heating Capacity: 4.2 kW
 Cooling Capacity: 3.7 kW



Medium Room

SEZ-KD50VAQ
 Heating Capacity: 6.4 kW
 Cooling Capacity: 5.1 kW

SEZ-KD60VAQ
 Heating Capacity: 7.4 kW
 Cooling Capacity: 5.6 kW



Large Room

SEZ-KD71VAQ
 Heating Capacity: 8.1 kW
 Cooling Capacity: 7.1 kW



Large Room

PEA-RP71EAQ
 Heating Capacity: 8.4 kW
 Cooling Capacity: 7.1 kW

PEA-RP100EAQ
 Heating Capacity: 11.2 kW
 Cooling Capacity: 10.0 kW

Features: Ceiling Concealed SEZ Series

- Compact design
- Whisper Quiet Operation
- Air Cleaning Filter
- Fresh Air Intake
- Guaranteed heating at -15°C

Features: Ducted PEA Series

- Ducted Heating
- Easy Installation
- Variety of air outlet options
- Computerised dehumidification
- Guaranteed heating at -15°C

Controls



Making the most of your Heat Pump starts with controls that allow you to experience comfort levels tailored to exactly match your preferences.

As Heat Pump features continue to become more advanced, controls which allow simplicity, accuracy and ease of use have been developed to maximise the benefits to users. Hand held remotes, wired wall controllers and advanced, internet-connectable central controllers not only provide a wide variety of control options, but also allow usage programming to optimise operating efficiencies.

Handheld Remotes (Standard Inclusions)



24 Hour Controller

Featuring a 24 hour timer, this simple handheld remote features an easy to read display, and a variety of operating modes at the touch of a button. The timer feature allows users to set stop/start operation on a daily basis. This remote comes standard on all models except the GE 60/71/80 and Designer Series (which include a 7-Day Controller as standard).



7 Day Controller

Allowing you to program up to four settings for each day of the week, you can come home to comfort without having to manually adjust the temperature. Perfect for anyone with a busy lifestyle, the 7 day controller is a great way to regulate your energy usage without compromising on comfort. This 7 day controller is available on the larger GE Series models (GE60/71/80) and Designer Series models only.

Wall Mounted Controllers (Optional Upgrade)



PAR-21 7 Day Controller

The Wired 7 Day Timer is an optional controller which can be connected to all Mitsubishi Electric systems listed in this brochure. The PAR-21 controller allows you to program up to 8 stop/start patterns per day for up to 7 days at a time. Other features include a variety of operation control functions, operation lock and multi-language display.



PAR-31 Deluxe 7 Day Controller

Containing all the features of the PAR-21 controller, the Deluxe PAR-31 also offers the following at the touch of a button: LCD backlit screen, Large, easy to read display, Night setback function, and Mode view for either icon or word display.

Central Controllers (Optional Upgrade)



AT-50A 5" LCD Touch Screen

Able to control up to 50 units and featuring both weekly and daily timer functions, the AT-50 is a cost effective solution for large domestic systems.



AG-150A 9" LCD Touch Screen

Controls up to 150 units, monitoring operation via a web browser or personal computer via LAN or telephone line. Featuring a large, backlit high-resolution touch panel, the display is highly visible and easy to read. The outer panel is also available in black.

Classic Multi Series Outdoor Unit

The Classic MXZ~VA range has been developed for small to medium-sized homes, providing systems of between one and six indoor units per outdoor unit.

This helps to optimise use of outdoor space while enhancing exterior aesthetics. Another advantage offered by multi room outdoor units is the ability to connect a single indoor initially, with the option of adding further indoors later as required. There is no need to connect all indoors at once, allowing you total freedom in your selection as well as future-proofing your home's heating requirements as needed.



Two Port

Connect 1-2 indoor units

MXZ-2C52
Heating Capacity: 6.4 kW
Cooling Capacity: 5.2 kW
Total Connectable Capacity: 7.0 kW



Three Port

Connect 1-3 indoor units

MXZ-3C54
Heating Capacity: 7.0 kW
Cooling Capacity: 5.4 kW
Total Capacity: 10.0 kW



Four Port

Connect 1-4 indoor units

MXZ-4C71
Heating Capacity: 8.6 kW
Cooling Capacity: 7.1 kW
Total Capacity: 12.5 kW



Four Port

Connect 1-4 indoor units

MXZ-4C80
Heating Capacity: 9.4 kW
Cooling Capacity: 8.0 kW
Total Capacity: 14.5 kW



Five Port

Connect 1-5 indoor units

MXZ-5C100
Heating Capacity: 12.0 kW
Cooling Capacity: 10.0 kW
Total Capacity: 17.1 kW



Six Port

Connect 1-6 indoor units

MXZ-6C120
Heating Capacity: 14.0 kW
Cooling Capacity: 12.0 kW
Total Capacity: 18.0 kW



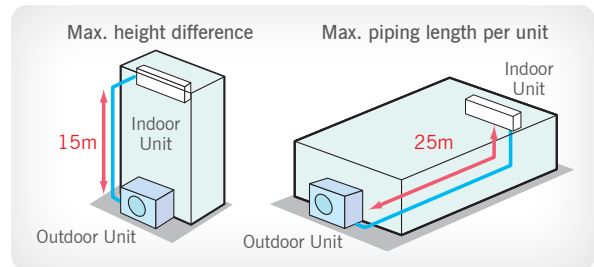
Fix Operation Mode

It is possible to lock operation to 'Heating' or 'Cooling' mode. This is convenient in places such as rental properties or hotels.

Longer Piping Length

Piping is extendible up to 25m per indoor unit with no more than 15m in height (additional refrigerant charge may be required). Total install pipe length may extend up to 80m*.

*MXZ-5C100



Quiet Operation (Silent Mode)*

When operating the MXZ outdoor unit in silent mode* the outdoor sound level on a MXZ-3C54VA is just 44dB(A). In combination with the MSZ-GE25/33VA, indoor noise can also be reduced to a quiet 19dB(A). New Zealand's Quietest Heat Pumps... Ever!

*Silent mode needs to be set when installed



Guaranteed Heating at -15°C

Not all heat pumps perform when they are needed most. Our multi range is guaranteed to effectively provide heating on those cold nights or mornings when you really need it.

Controls

Refer to page 13 for the full list of available controls.



Energy Saving with High COP

Mitsubishi Electric Inverter Technology provides superior energy efficiency with high COPs (CoEfficient of Performance). The MXZ-3C54VA multi outdoor has a COP of 4.56, meaning for every dollar you spend, you get almost five dollars worth of heat!

Model	Wall Mounted														Floor Mounted			Ceiling Mounted						Concealed Systems						
	MSZ-GE								MSZ-FB		MSZ-EF				MFZ-KA			SLZ-KA		PLA		PCA		SEZ-KD					PEA	
	22	25	33	42	50	60	71	80	35	50	22	25	35	42	50	25	35	50	25	35	50	60	71	50	60	71	35	50	60	71
MXZ-2C52	•	•	•	•	•			•		•	•	•	•	•	•	•		•	•							•				
MXZ-3C54	•	•	•	•	•			•	•	•	•	•	•	•	•	•	•	•							•	•				
MXZ-4C71	•	•	•	•	•	•		•	•	•	•	•	•	•	•	•	•	•	•						•	•	•			
MXZ-4C80	•	•	•	•	•	•		•	•	•	•	•	•	•	•	•	•	•	•	•	•	•	•	•	•	•	•	•	•	
MXZ-5C100	•	•	•	•	•	•		•	•	•	•	•	•	•	•	•	•	•	•	•	•	•	•	•	•	•	•	•	•	
MXZ-6C120	•	•	•	•	•	•		•	•	•	•	•	•	•	•	•	•	•	•	•	•	•	•	•	•	•	•	•	•	

Power Multi Series Outdoor Unit

The Power Multi range provides a quiet, highly efficient and flexible air conditioning system for all your heating and cooling needs

The Power Multi range has been designed specifically for homes or small offices and is capable of connecting to a wider range of commercial-type indoor units via a branch box which simplifies piping work. It provides a quiet, highly efficient and flexible system for all your heating and cooling needs.



Eight Port

Connect 2-8 indoor units

MXZ-8B140VA-A
Heating Capacity: 16.0 kW
Cooling Capacity: 14.0 kW
Total Capacity: 18.5 kW



Eight Port

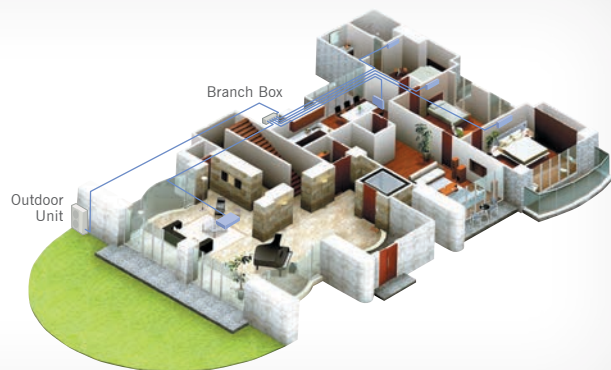
Connect 2-8 indoor units

MXZ-8B160VA-A
Heating Capacity: 18.5 kW
Cooling Capacity: 15.5 kW
Total Capacity: 20.2 kW



Branch Box

Mitsubishi Electric supply branch controllers to allow the maximum number of indoor units to be connected.





Specifications

Outdoor Units

Classic Multi Series Outdoor Unit p.15

MODEL NAME				MXZ-2C52VA	MXZ-3C54VA	MXZ-4C71VA	MXZ-4C80VA	MXZ-5C100VA	MXZ-6C120VA
CONNECTABLE INDOORS				1-2 indoor units	1-3 indoor units	1-4 indoor units	1-4 indoor units	1-5 indoor units	1-6 indoor units
COOL	Capacity	Rated	[kW]	5.2	5.4	7.1	8.0	10.0	12.0
		Min-Max	[kW]	1.1 - 6.0	2.9 - 6.8	3.7 - 8.8	3.7 - 9.2	3.9 - 11.0	3.5 - 13.5
	Input		[kW]	1.30	1.19	1.68	1.96	2.80	3.61
	EER ³			3.83	4.3	4.02	3.86	3.44	3.21
	Sound Level		[dBA]	49	47	48	46	51	55
	Rated Current ⁺		[A]	5.83	5.23	7.38	8.59	12.3	15.85
	Max. Current		[A]	10.2	15	15	17.4	18.4	27
	Air Volume (High)		[L/s]	548.3	701.67	701.67	701.67	943.3	923.3
HEAT	Capacity	Rated	[kW]	6.4	7	8.6	9.4	12.0	14.0
		Min-Max	[kW]	1.0 - 7.0	2.6 - 9.0	3.4 - 10.7	3.4 - 11.6	4.1 - 14.0	3.5 - 16.5
	Input		[kW]	1.61	1.46	1.71	1.93	2.84	3.47
	COP ³			3.86	4.56	4.79	4.65	4.07	3.88
	Sound Level		[dBA]	50	51	52	48	54	57
	Rated Current ⁺		[A]	7.22	6.43	7.49	8.48	12.45	15.24
	Max. Current		[A]	10.2	15	15	17.4	18.4	27
	Air Volume (High)		[L/s]	555	716.67	716.67	730	988.3	1165
Max. Total Connectable Capacity			[kW]	7.0	10.0	12.5	14.5	17.1	18.0
Power Supply [V, Phase, Hz]				230V, Single Phase, 50Hz, Outdoor Power Supply					
Outdoor	Dimensions (WxDxH)	[mm]	800 x 285 x 550	840 x 330 x 710	840 x 330 x 710	900 x 320 x 900	900 x 320 x 900	900 x 320 x 1070	
	Weight	[kg]	38	57	58	67	68	88	
Ext. Pipe	Liquid (Diameter)	[mm]	6.35 x2	6.35 x3	6.35 x4	6.35 x4	6.35 x5	6.35 x6	
	Gas (Diameter)	[mm]	9.52 x2	9.52 x3	9.52 x3 + 12.7 x1	9.52 x3 + 12.7 x1	9.52 x4 + 12.7 x1	9.52 x5 + 12.7 x1	
	Max. Length ⁺ (Total/Each)	[m]	30/20	50/25	60/25	70 / 25	80 / 25	80 / 25	
	Max. Height [†]	[m]	15 (10 [‡])	15 (10 [‡])	15 (10 [‡])	15 (10 [‡])	15 (10 [‡])	15 (10 [‡])	
Outdoor	Cooling	[°C]	-10 / +43	-10 / +43	-10 / +43	-10 / +43	-10 / +43	-10 / +43	
	Heating	[°C]	-15 / +24	-15 / +24	-15 / +24	-15 / +24	-15 / +24	-15 / +24	

Power Multi Series Outdoor Unit p.17

MODEL NAME				MXZ-8B140VA	MXZ-8B160VA
CONNECTABLE INDOORS				1-8 indoor units	1-8 indoor units
COOL	Capacity	Rated	[kW]	14.0	15.5
		Min-Max	[kW]	*	*
	Input		[kW]	3.79	4.64
	EER ³			3.52	3.21
	Sound Level		[dBA]	50	51
	Rated Current ⁺		[A]	16.55	17.05
	Max. Current		[A]	29.5	29.5
	Air Volume (High)		[L/s]	1666.67	1766.67
HEAT	Capacity	Rated ²	[kW]	16.0	18.0
			[kW]	3.9	4.8
	COP ³			3.91	3.61
	Sound Level		[dBA]	52	54
	Rated Current (Out)		[A]	17.05	21.09
	Max. Current		[A]	29.5	29.5
	Air Volume (High)		[L/s]	1666.67	1766.67
	Max. Total Connectable Capacity			[kW]	18.5
Power Supply [V, Phase, Hz]				230V, Single Phase, 50Hz	
Outdoor	Dimensions (WxDxH)	[mm]	950 x330 x1350	950 x330 x1350	
	Weight	[kg]	129	129	
Ext. Pipe	Liquid (Diameter)	[mm]	9.52 x1	9.52 x1	
	Gas (Diameter)	[mm]	15.88 x1	15.88 x1	
	Max. Length ⁺ (Total/Each)	[m]	115/70	115/70	
	Max. Height [†]	[m]	20(30 ⁻)	20(30 ⁻)	
Outdoor	Cooling	[°C]	-5 / +46	-5 / +46	
	Heating	[°C]	-15 / +21	-15 / +21	

²Given the range of indoor capacities and diversities available for use on these models, the Power Multi outdoor units do not have a fixed minimum or maximum capacity

Please note: Final outdoor unit selection will be affected by several different factors. The combination of rooms and their location, as well as operating use will determine which of the proposed models you require. In many cases, an outdoor with a lower heating capacity may be adequate where not all indoor units are required to operate in maximum heating mode simultaneously. Or, if you are considering adding more indoor units in the future, in the interests of future-proofing, you may be best to select an outdoor unit capable of providing more capacity than you currently require.

⁺ Electrical data is for outdoor unit only.

³ MXZ-2C52VA » MSZ-35VA x2
 MXZ-3C54VA » MSZ-GE25VA x3
 MXZ-4C71VA » MSZ-GE25VA x4
 MXZ-4C80VA » MSZ-GE35VA x4
 MXZ-5C100VA » MSZ-GE25VA x5
 MXZ-6C120VA » MSZ-GE25VA x6
 MXZ-8B140VA/YA » MSZ-GE22VA x8 + PAC-AK52BC + PAC-AK31BC
 MXZ-8B160VA/YA » MSZ-GE25VA x8 + PAC-AK52BC + PAC-AK31BC

NOTE:

Rating Conditions (AS / NZS 3823).

COOLING Indoor: 27°C DB, 19°C WB. Outdoor: 35°C DB
 HEATING Indoor: 20°C DB. Outdoor: 7°C DB, 6°C WB.

Refrigerant piping length (one way): 5m

Running Current and Power Input figures are for outdoor unit only.

[†] Maximum length is inclusive of height differential.

i.e. (30 max. length / 15 max. height) means that 2x pipes can be 10m high and 5m across each for a total length of 30m.

[‡] If the outdoor unit is installed higher than the indoor unit.

Ensuring your heat pump is the right size for your home is just as important as choosing the right style.

Correct sizing is crucial in ensuring you receive optimal comfort levels for your home. Selecting a heat pump which is too small for the area you are trying to heat will result in increased noise, poor performance and higher power consumption as the unit works to achieve heating levels beyond its capability. Installing a heat pump which is too large will create draughts and uneven heat output.

Factors such as the age of the home, adequate insulation, the amount of glass windows and the climate of the area you live in must also be considered before installation takes place, as these have a direct bearing on the performance required.

Visit www.mitsubishi-electric.co.nz to see what heat pump options best suit your home.

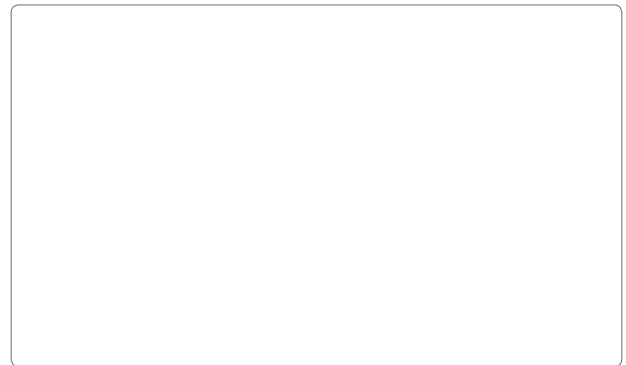
Multi room system installations are more complex as the outdoor unit selection is vital to ensuring the multiple indoor units run effectively and efficiently. A qualified Mitsubishi Electric installer can complete a free in-home consultation to take you through this process.



Like 'Mitsubishi Electric in NZ' on Facebook to find out more information about the entire range of Mitsubishi Electric products and stay up to date with news, reviews and giveaways!

Your Heat Pump Recommendation

Store Contact Details



Place business card/contact stamp here

Range Recommended (Circle below)



Classic GE Series
Wall Mounted p.5



Deluxe FB Series
Wall Mounted p.6



Designer Series
Wall Mounted p.7



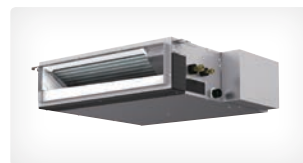
Classic KA Series
Floor Mounted p.9



Cassette SLZ & PLA Series
Ceiling Mounted p.10



Ceiling Suspended PCA Series
Ceiling Mounted p.11



Ceiling Concealed SEZ Series
Concealed Systems p.12



Ducted PEA Series
Concealed Systems p.12

Notes



For more information on Mitsubishi Electric Heat Pumps, please call our customer service team on **0800 784 382**

 **MITSUBISHI ELECTRIC**
www.mitsubishi-electric.co.nz



Black Diamond Technologies

Exclusive distributor of Mitsubishi
Electric products in New Zealand.

WELLINGTON

// HEAD OFFICE

1 Parliament Street
PO Box 30772
Lower Hutt 5040

Phone (04) 560 9147
Fax (04) 560 9133

AUCKLAND

// LOCAL OFFICE

Unit 1, 4 Walls Road
PO Box 12726
Penrose, Auckland 1642

Phone (09) 526 9347
Fax (09) 526 9369

CHRISTCHURCH

// LOCAL OFFICE

44 Halwyn Drive
PO Box 16904
Hornby, Christchurch 8441

Phone (03) 341 2837
Fax (03) 341 2838